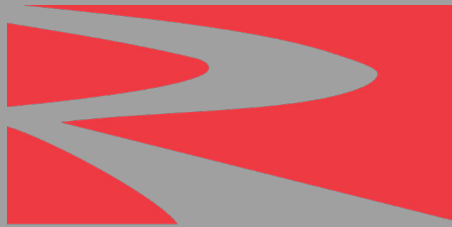


Ceramic Anchors



RESCO[®]
PRODUCTS, INC.

www.RescoProducts.com

CERAMIC ANCHORS

RESCO Products will now offer a stocking program based on supplying ALUMEX P-85 HS anchors in the design previously supplied to the market place by National Refractories. The molds have been transferred to the RESCO East Canton Plant and attached are details of the refractory shapes and related steel hardware to satisfy most refractory anchor problems, utilizing a complete package of anchors and attachment situations.

The main refractory anchor shape is prefaced with K/R and then the length of the anchor shape. For walls and C-Clips the gap of 5/8" between the back of the anchor and the supporting steel is designed to be standard length refractory linings, such as 9", 12", 13 1/2", and 18", for side walls. For roofs the standard gap between the bottom of the I-Beam and top of the refractory anchor is either 7/8" or 1 1/8" depending on the use of Ice Tongs or a traditional D9703 hanger attachment. If the lining is needed to fit a specific thickness, not matching these standards, the brick shape can always be cut to suit, or some special metal attachments can be formed.

K/R-638

K/R-838

K/R-1138

K/R-1278

K/R-1738

K/R-2178



The following shapes will be standard:

SHAPE	LENGTH	STOCK	PART #
K/R-638	6 3/8"	1000 pcs	91764
K/R-838	8 3/8"	3000 pcs	89718
K/R-1138	11 3/8"	3000 pcs	89863
K/R-1278	12 7/8"	1000 pcs	89719
K/R-1738	17 3/8"	1000 pcs	89844

Alumex[®] P-85 HS

Technical Data

HIGH ALUMINA, HIGH STRENGTH BRICK

PHYSICAL PROPERTIES (ASTM procedures used where applicable)	Bulk Density: (lb/ft ³)	174
	Modulus of Rupture: (lb/in ²)	2,500
	Cold Crushing Strength: (lb/in ²)	14,000
	Apparent Porosity, %:	13.8
	Permanent Linear Change, %: 2910°F (1600°C) & 5 Hours	0.4
CHEMICAL ANALYSIS (Ignited)	Al ₂ O ₃	79.2
	SiO ₂	10.2
	Fe ₂ O ₃	1.7
	TiO ₂	3.1
	CaO	0.3
	MgO	0.2
	P ₂ O ₅	4.9
	Alkalies	1.4
<p>The properties shown on this data sheet represent typical average results generated using standard ASTM test methods (unless otherwise noted) conducted under controlled condition (using standard rectangular shapes), and should not be considered to be guaranteed specifications. Properties are subject to normal manufacturing statistical standard deviation ranges, and Resco Products, Inc. Reserves the right to modify the properties and specifications at any time without prior notice.</p> <p>Resco Products disclaims any express or implied warranties based on this sheet.</p>		

CERAMIC ANCHORS

K/R-638

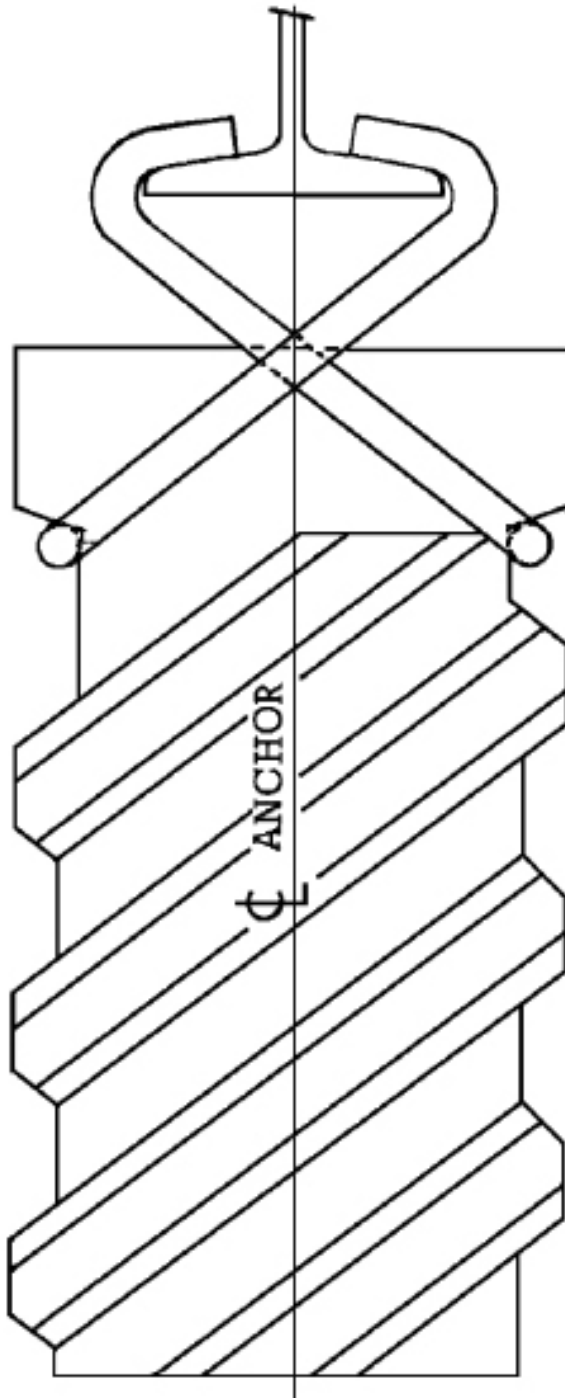
K/R-838

K/R-1138

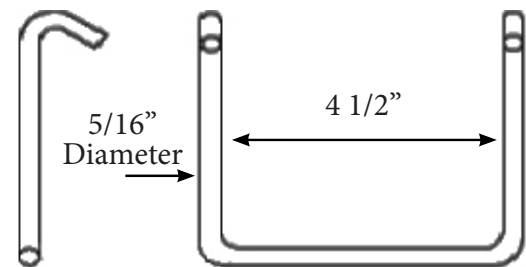
K/R-1278

K/R-1738

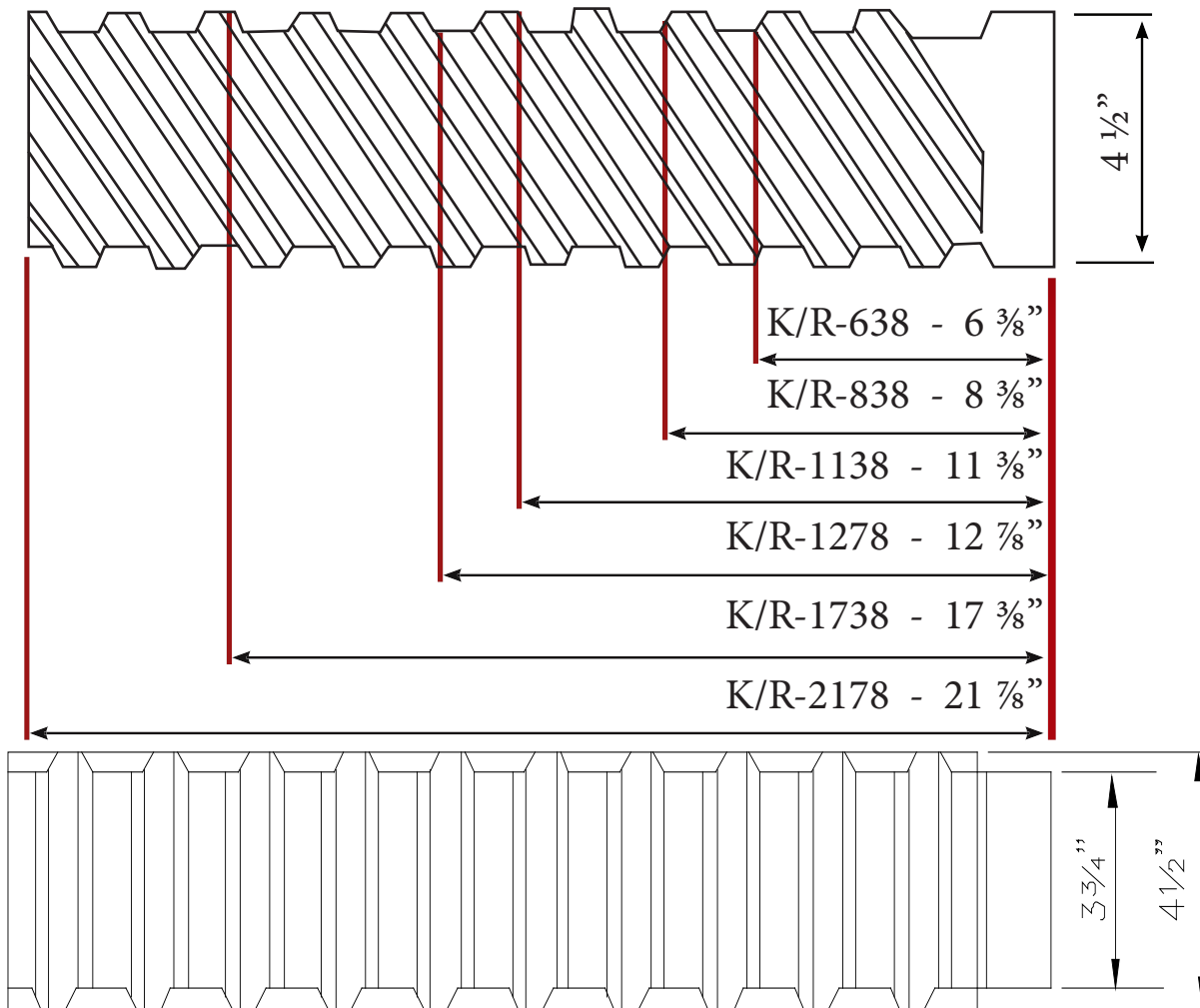
K/R-2178



D-5691 Hanger



ANCHOR	LENGTH, "A"
K/R-638	7 5/8"
K/R-838	9 5/8"
K/R-1138	12 5/8"
K/R-1278	14 1/8"
K/R-1738	18 5/8"
K/R-2178	23 1/8"



DESCRIPTION

ANCHOR	LENGTH	WT. EA., LBS	PCS PER PALLET	PART #
K/R-638	6 3/8"	10.51	342	91764
K/R-838	8 3/8"	13.77	280	89718
K/R-1138	11 3/8"	19.07	224	89863
K/R-1278	12 7/8"	21.52	182	89719
K/R-1738	17 3/8"	29.27	142	89844
K/R-2178	21 7/8"	37.03	114	91765

CERAMIC ANCHORS

K/R-638

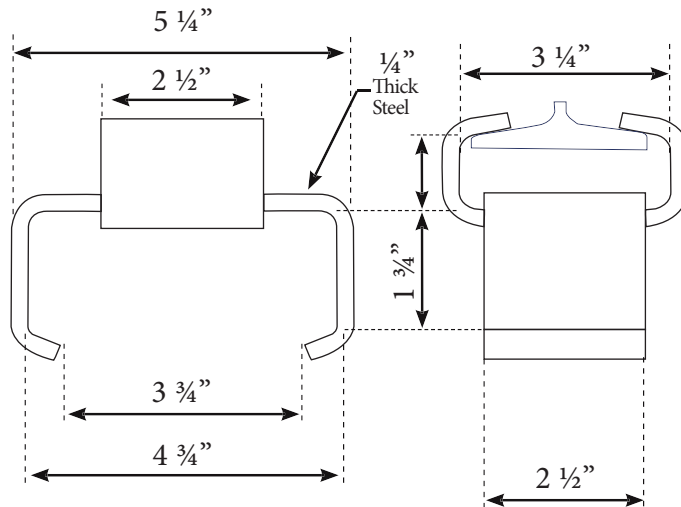
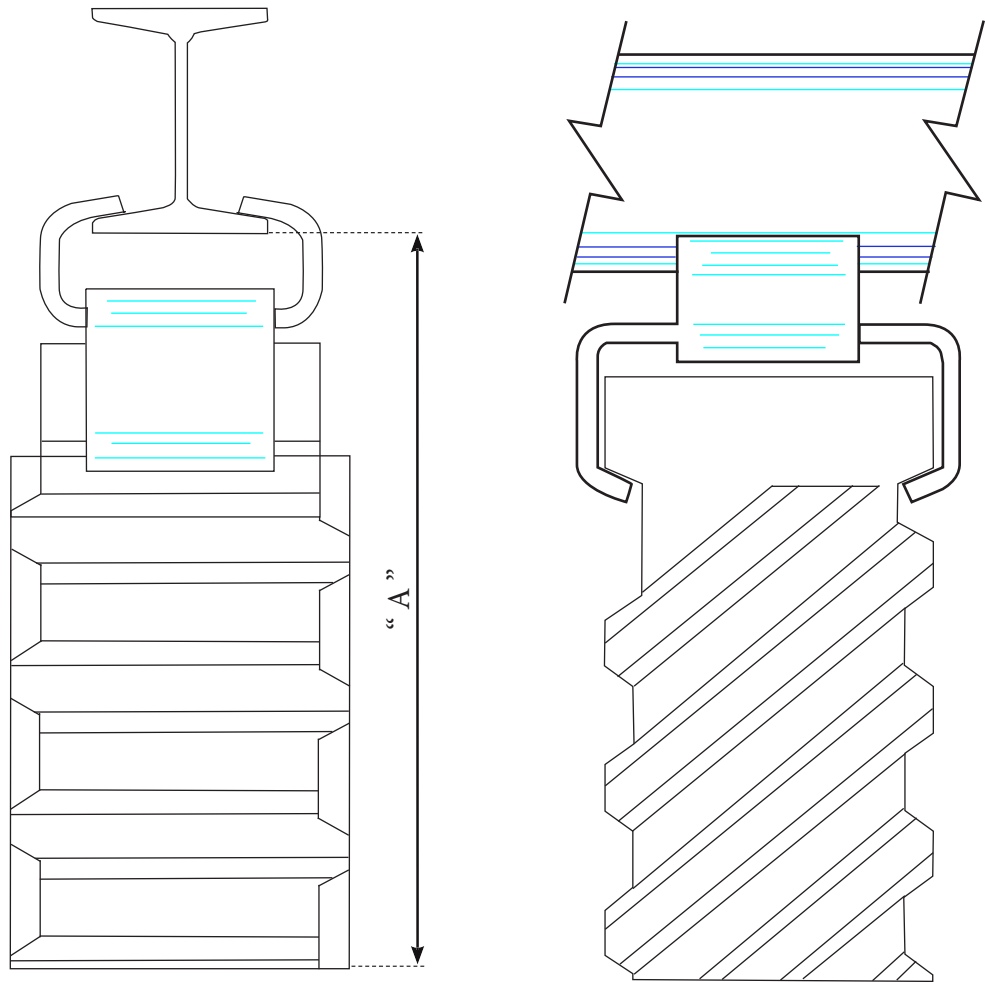
K/R-838

K/R-1138

K/R-1278

K/R-1738

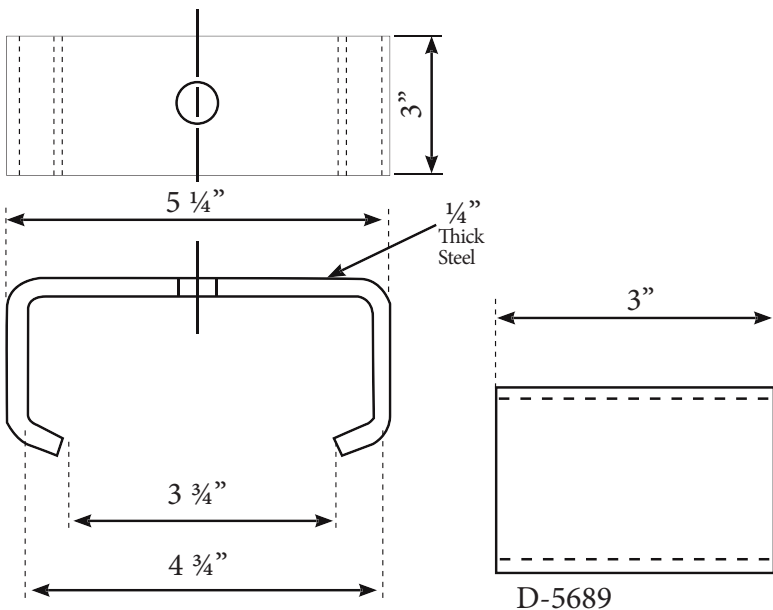
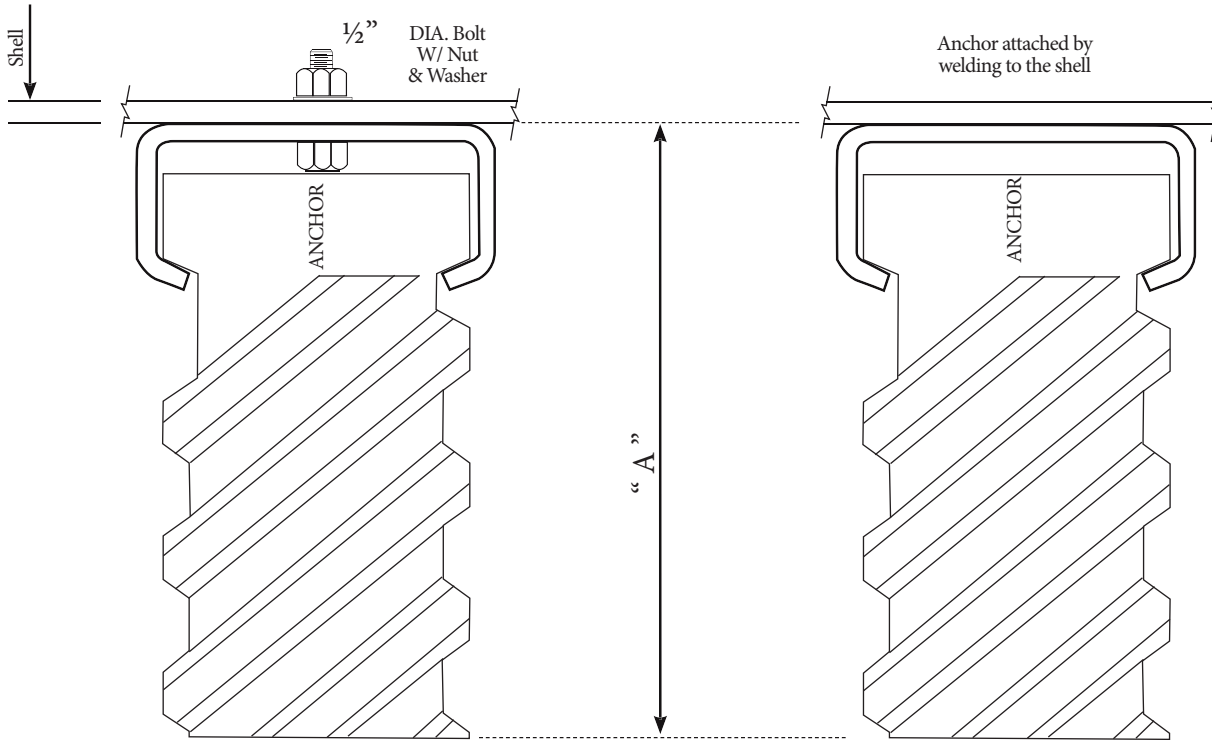
K/R-2178



Assembly of K/R anchors and D9703 hanger suspended from an S 3X5.7 Beam

ANCHOR	LENGTH, "A"
K/R-638	7 7/8"
K/R-838	9 7/8"
K/R-1138	12 7/8"
K/R-1278	14 3/8"
K/R-1738	18 7/8"
K/R-2178	23 3/8"

CERAMIC ANCHORS



Welding Notes

1. The surface plate shall be dry and clean.
2. Tack weld the 4 corners of the hanger before welding to prevent warpage
3. 304 stainless steel hangers shall be welded with AWS 308 stainless steel electrodes
4. 310 stainless steel hangers shall be welded with AWS 310 electrodes
5. Each side of the hanger should be welded in 4 places and the length shall be between 1/8" and 1" for each weld

ANCHOR	LENGTH, "A"
K/R-638	7"
K/R-838	9"
K/R-1138	12"
K/R-1278	13 1/2"
K/R-1738	18"
K/R-2178	22 1/2"

RESCO PRODUCTS LOCATIONS

K/R-638

K/R-838

K/R-1138

K/R-1278

K/R-1738

K/R-2178



★ Pittsburgh, PA Phone: 888-283-5505 Fax: 412-494-4571	◆ East Canton, OH Phone: 330-488-1226 Fax: 330-488-6042	◆ New Castle, PA Phone: 724-652-6668 Fax: 724-652-6664	◆ Tarentum, PA Phone: 724-224-8800 Fax: 724-224-3353
◆ Santa Fe Springs, CA Phone: 562-802-2463 Fax: 562-802-0315	◆ Moulton, AL Phone: 256-974-3731 Fax: 256-974-5880	◆ Hammond, IN Phone: 219-844-7830 Fax: 219-844-7246	◆ Greensboro, NC Phone: 336-854-5916 Fax: 336-855-5979
◆ Oak Hill, OH Phone: 740-682-7794 Fax: 740-682-6438	◆ Hillsborough, NC Phone: 919-732-3981 Fax: 919-732-9414	◆ Canada Customer Service Phone: 450-691-2933 Fax: 450-691-2966	◆ Newbold, UK 🇬🇧 Phone: 44 1530 222694

Founded in 1946, Resco has served its markets with specialized products ever since, initially, with the refining industry and later in the steel industry. Innovations have been key to Resco's long success, including AA-22 and the original patent on semi-universal ladle brick.

Recent acquisitions have diversified Resco into many new refractory markets. The addition of Nationals product lines allows Resco to offer a comprehensive range of products, and dolomite products are available.

One Robinson Plaza
6600 Steubenville Pike #300
Pittsburgh, PA 15205

Edited 2019



RESCO[®]
PRODUCTS, INC.
www.RescoProducts.com

